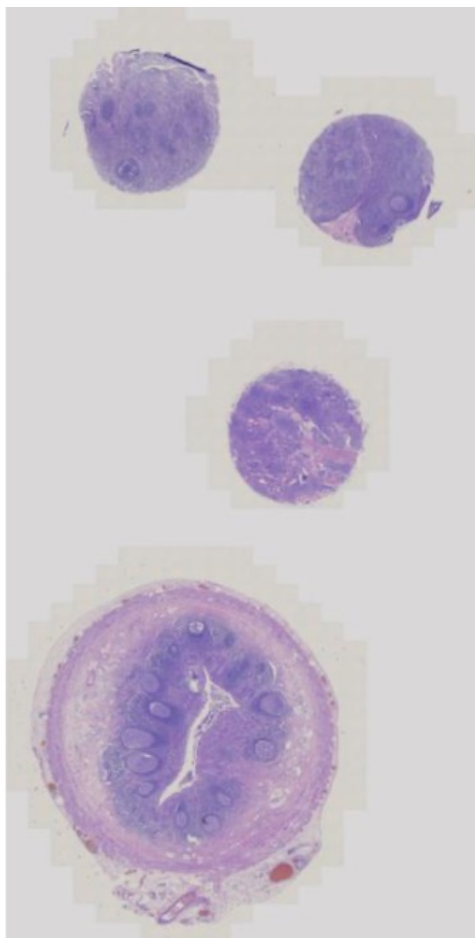
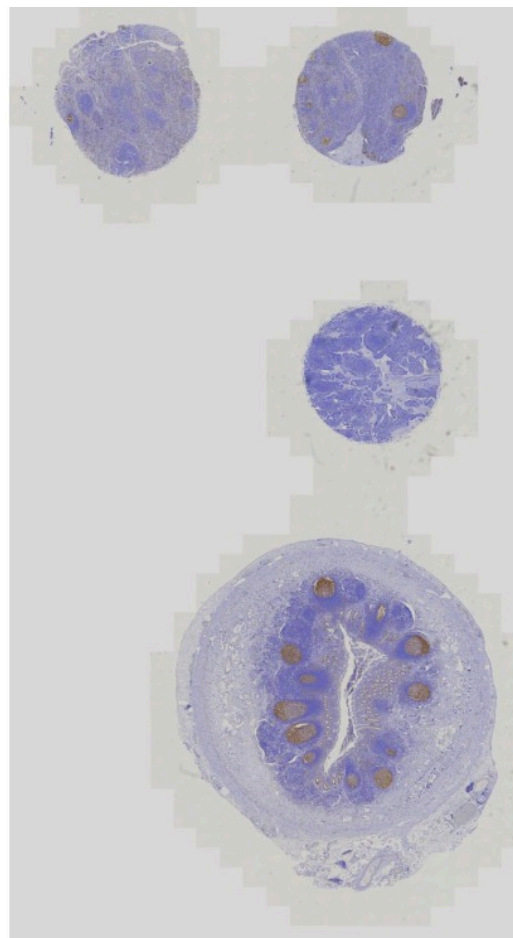


MIB-1 (Ki-67)



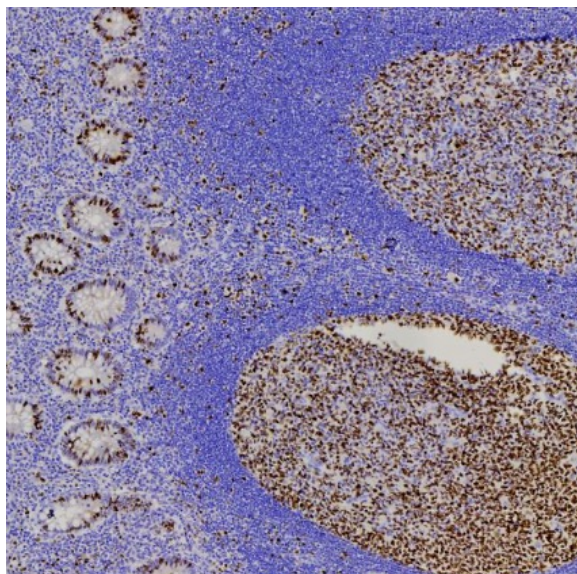
HE staining in scanner view.



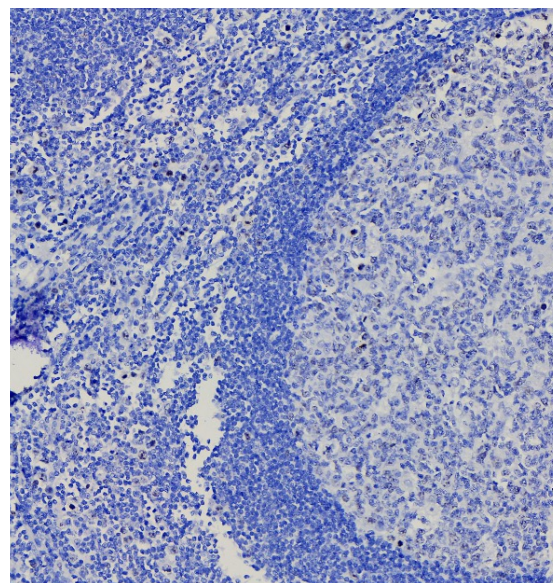
Immunostaining, scanner view

Provided sections in this run.

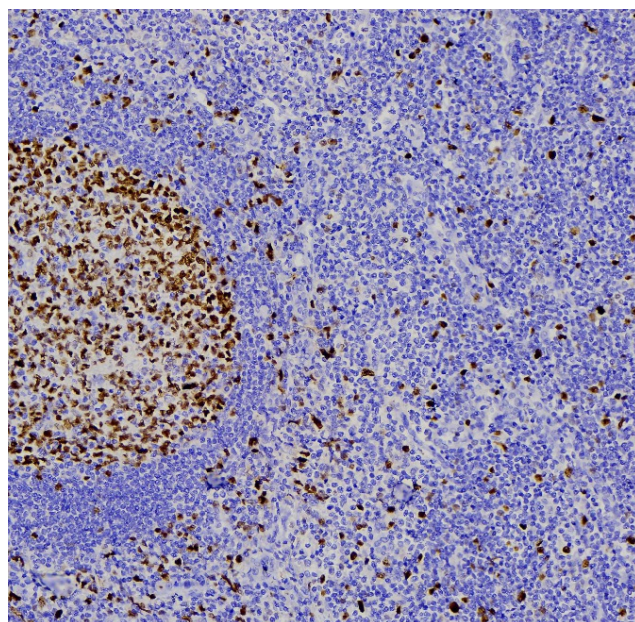
Follicular lymphoma, lymph node with reactive hyperplasia, Infiltrating duct carcinoma of breast and appendix were submitted. Out of these, follicular lymphoma and IDC were low proportion cases while the lymph node and appendix were high proportion cases.



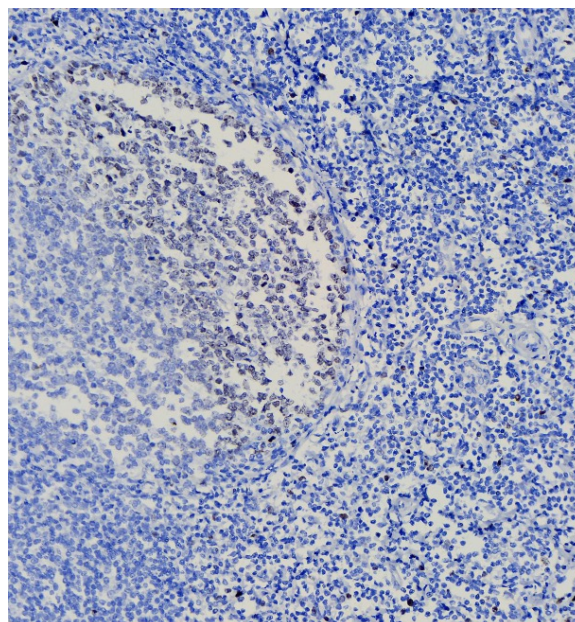
Optimum staining of appendix.



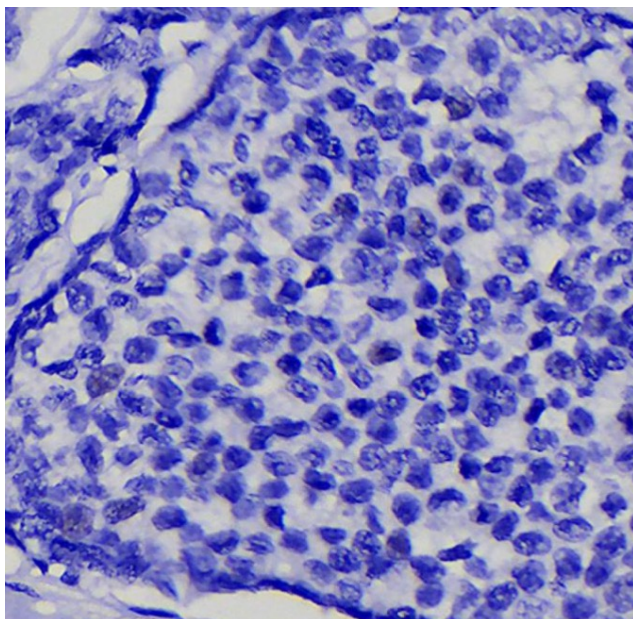
Suboptimal staining due to inferior antibody.



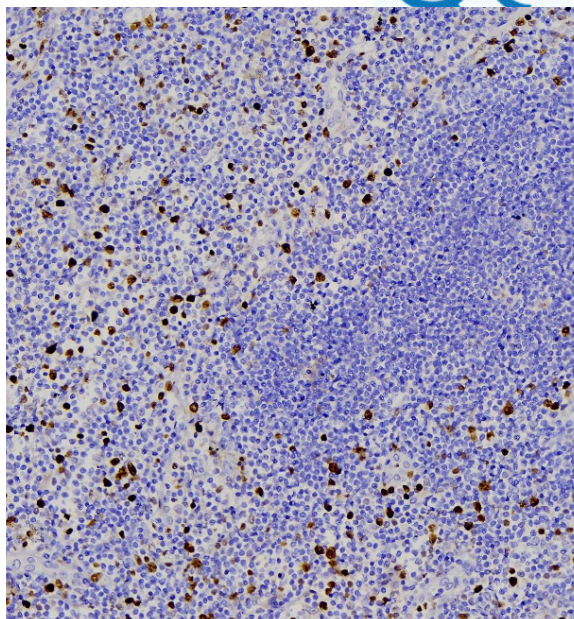
Optimum staining in appendix



Suboptimal staining due to inappropriate HIER. Note the irregular drying. The staining is less intense and less in proportion.



Extremely weak intensity staining was noted in occasional tumour cells in case of IDC.



Optimal staining of follicular lymphoma

Protocol used by the top 3 in this run

Variable	Protocol not submitted by this participant	2	3
Technique		Manual	Automated. Roche Ventana Benchmark XT
Clone		MIB-1	30-9
Vendor		DAKO IS626	VENTANA 790-4286
Format		RTU	RTU
Batch/Year		20079815	H10583
Expiry		31/12/2022	14/07/2023
Dewaxing temperature		68 DEGREE CELSIUS	75C in EZ Prep
Retrieval		HIER	Heat Induced Epitope Retrieval (HIER)
Enzyme		N/A	NA
HIER		Microwave oven	CC1 STANDARD PROTOCOL
Peak T and Time		600watt/800; 8 minutes then dilute with distilled water to make volume then again 8 minutes	120C 2 MIN



Variable	Protocol not submitted by this participant	2	3
Peak Pressure and Time		N/A	NA
Retrieval Buffer		Company provided, PathnSitu, Epitope Retrieval buffer, TRIS EDTA (50X)	Company Provided, Tris-EDTA Buffer
pH		9	7.8
Blocking		Polyexcel Hydrogen Peroxidase, 10	Inhibitor Cm, 16 min
Wash sol		Immunowash Buffer (25x) TRIS buffered saline with saponifying agent (TWEEN 20)	10XSSC
Dilution of RTU		NO	NO
Dilution of conc		N/A	NA
Diluent		N/A	NA
Inc time of Primary		1 HOUR	32 MIN
Detection		Polymer based system	LSAB
Cat No		Polyexcel Target Binder , PathnSitu, IPS006,I08006CC, 4/2023 Polyexcel HRP labelled polymer, PathnSitu, IPS007,I08007CC, 4/2023	Ultraview Universal DAB Detection kit F22794-F23052 14/07/2023
Inc time of Sec		Polyexcel Target Binder- 10 minutes Polyexcel HRP labelled polymer- 10 minutes	NA
Chro-substrate		5-10 MINUTES	8 MIN
Post-treatment		NO	COPPER Cm, 5min
Counterstain		HAEMATOXYLIN	Haematoxylin